

MINNESOTA DEPARTMENT OF TRANSPORTATION RIGHT OF WAY PLAT NO. 36-36

CONTROL SECTION NO. 3609 (65=159) 903
IN THE EAST HALF OF THE NORTHEAST QUARTER OF SECTION 23, T.64 N., R.22 W.,
IN THE EAST HALF OF THE SOUTHEAST QUARTER OF SECTION 23, T.64 N., R.22 W.,
IN THE WEST HALF OF THE NORTHWEST QUARTER OF SECTION 24, T.64 N., R.22 W.,
IN THE WEST HALF OF THE SOUTHWEST QUARTER OF SECTION 24, T.64 N., R.22 W.,
KOOCHICHING COUNTY, MINNESOTA

PLAT BOUNDARY DATA			
FROM	TO	DISTANCE (FT)	AZIMUTH
B1	B3602	2633.21	359°16'07"
B3602	NE 23	75.04	91°01'34"
NE 23	B3603	75.01	89°58'13"
B3603	B4	2633.74	179°16'07"
B4	B3605	2633.51	179°16'07"
B3605	NE 26	75.02	270°25'39"
NE 26	B3606	75.04	271°11'40"
B3606	B1	2633.22	359°16'07"

THE COMMISSIONER OF TRANSPORTATION IS HEREBY DESIGNATING THE DEFINITE LOCATION OF TRUNK HIGHWAY NO. 65 FROM 2 MILES NORTH OF THE JUNCTION WITH C.S.A.H. NO. 74 TO 3 MILES NORTH OF THE JUNCTION WITH C.S.A.H. NO. 74

as shown on this plat prepared by the State of Minnesota Department of Transportation is hereby certified as the official plat of that portion of said T.H. 65 within the designated portion of Sections 23 & 24 and the Commissioner's Order therefor, pursuant to Minnesota Statutes, Section 160.085, Section 160.14 subd. 1, Section 161.16 subd. 2, and Section 161.18.

It is further ordered that it is necessary to acquire all trees, shrubs, grass and herbage within the right of way of said Trunk Highway, and to keep and have the exclusive control of the same.

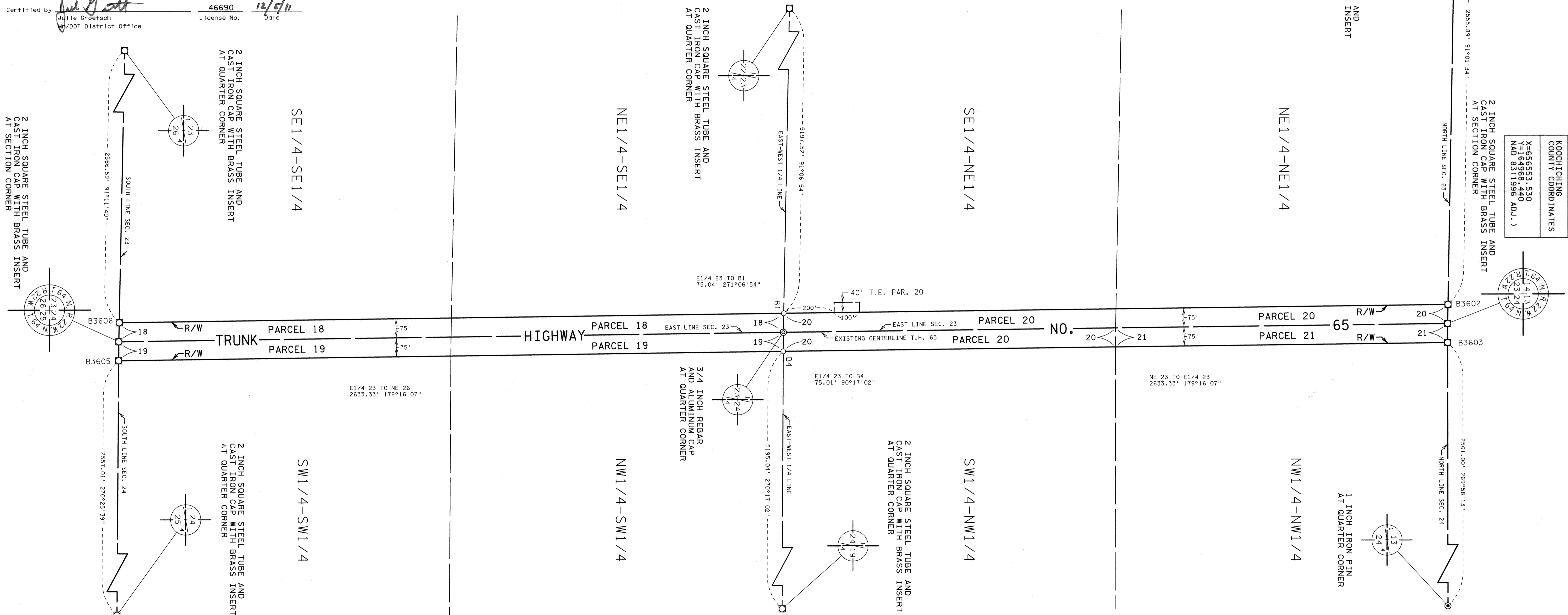
Commissioner's Order No.	Location	Nature of Interest
92359	PLAT 36-36	Definite location, width, and temporary easement.

Certified by: Thomas K. Sorel
Commissioner of Transportation

by Robert S. Brown
Director, Office of Land Management

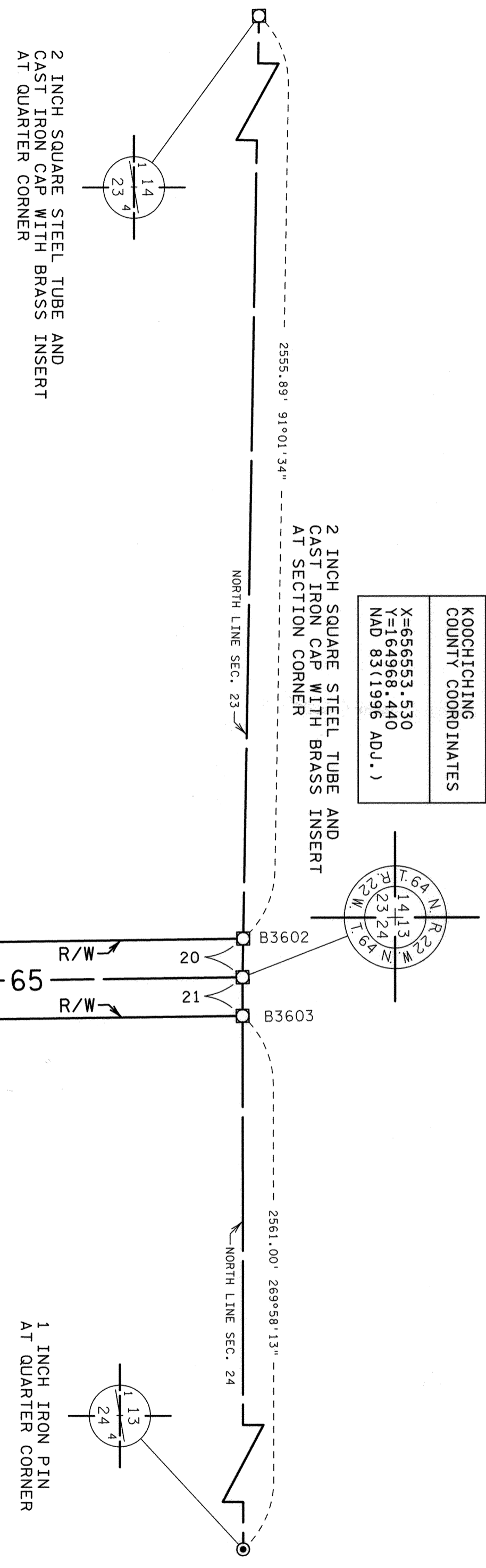
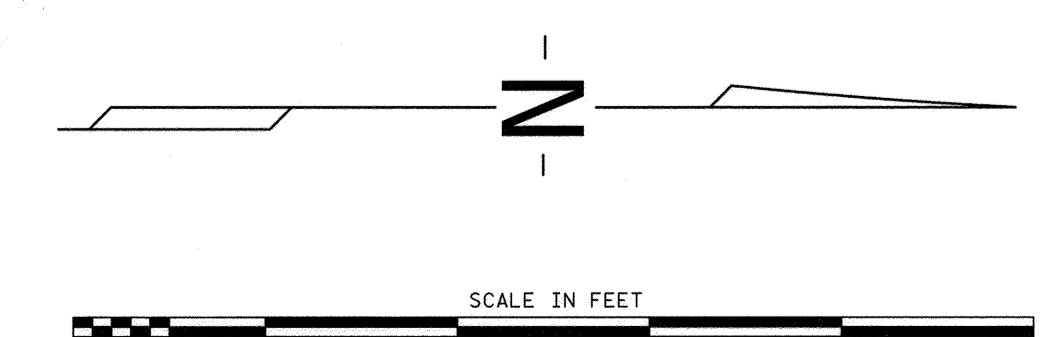
I hereby certify that this plat was surveyed and prepared by me or under my direct supervision and that I am a duly Licensed Land Surveyor under the Laws of the State of Minnesota; that all measurements are correctly shown on this plat; that all monuments have been correctly placed as shown on this plat; that the Certificates of Location for the monumented Public Land Survey corners as shown on this plat are on file in the County Recorder's Office (if required under Minnesota Statutes, Section 160.15) and/or the County Surveyor's Office; that this plat meets the requirements of Minnesota Statutes, Section 160.085, Section 160.14 subd. 1, Section 161.16 subd. 2, and Section 161.18; that the parcel ownerships are correctly described and delineated on the plat; and that the proposed right of way boundary lines are correctly designated on the plat.

Certified by: Julie Groetsch
License No. 46690
Date 12/5/11
MNDOT District Office



CONVENTIONAL SYMBOLS	
Section Line	—
Quarter Line	—
Sixteenth Line	—
Property Line	—
R/W Boundary	—
Existing D.O.T. R/W Line	—
And Other Road R/W	—
Railroad R/W	—
Private Easement	—
Temporary Easement	—
Building Removal Easement	—
R/W Parcel Number	3/4
Access Control	—
Access Opening	— OPEN
Cast Iron Monument	—
2in. x 2in. D.O.T. Iron Tube with Cap	—
3/4" D.O.T. Rebar with Cap	—
Other Iron Monument	—
Concrete or Stone Monument	—
R/W Boundary Corner	—

- SURVEY STANDARDS**
- The plat values, azimuths, and distances are based on the County coordinate system.
 - The boundary monuments shown on this plat have been field checked for location. The standard deviation for the monument position is 0.10 foot.
 - The county coordinates shown on one monument are based on ties to national control monuments.
 - For details of this survey contact the Surveying Section at the Minnesota Department of Transportation: DULUTH
Name of District
- AZIMUTH ORIENTATION AND GRID CONVERSION**
Plat azimuths are oriented to the County Coordinate System with 0 degrees 0 minutes 0 seconds being "GRID NORTH". Plat distances are ground lengths.



DOC. NO. 273339
 OFFICE OF COUNTY RECORDER
 KOOCHICHING COUNTY, MINN
 I HEREBY CERTIFY THAT THIS PLAT HAS BEEN FILED IN THIS OFFICE ON DEC. 9, 2011, AT 4:15 PM IN CAB. _____ NO. _____
 COUNTY RECORDER